

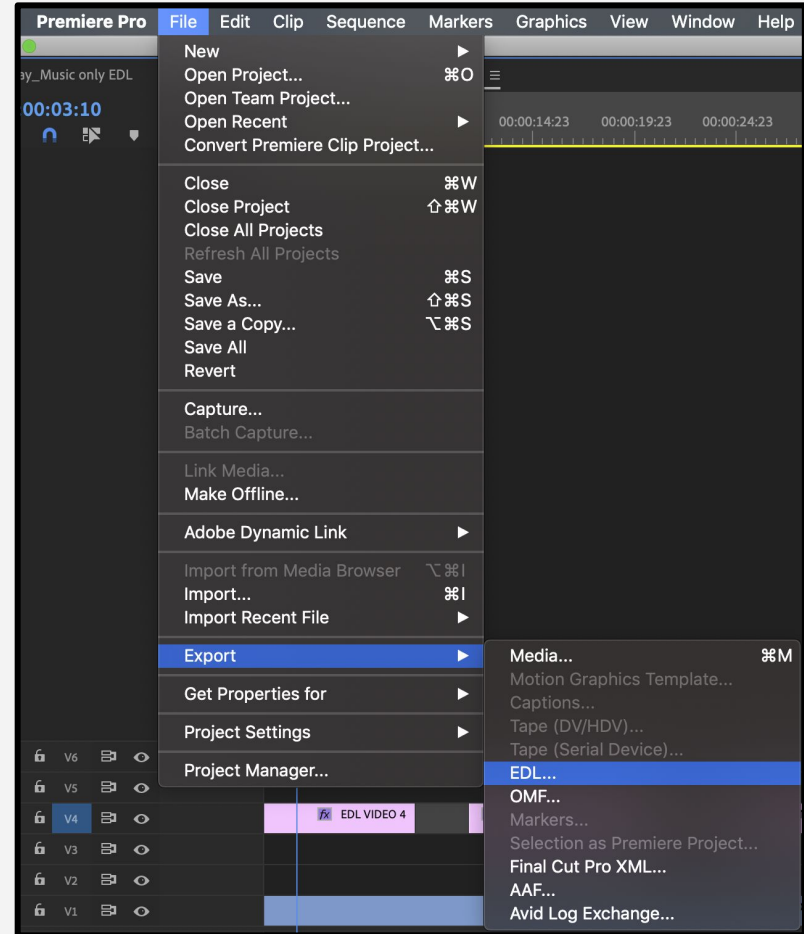
Before you Begin

Before creating an EDL, please prep your sequence. Due to restrictions in Adobe Premiere, EDLs are limited to 1 video track within the CMX-EDL structure. Please ensure all graphic files, texted elements, and subtitles are placed on a single video track. Any graphic files, texted elements and subtitles existing outside of this single video track, will not be included on the graphic cue sheet.

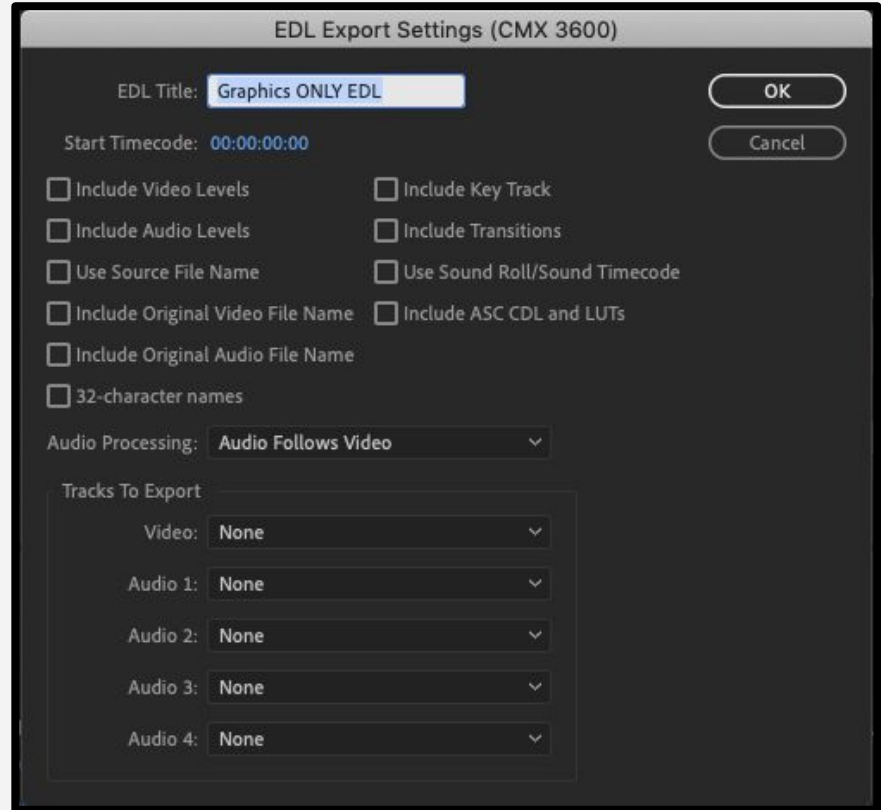
Once your sequence is prepped, take the following steps to export a graphics only EDL.

Steps to Create a Graphics Only EDL

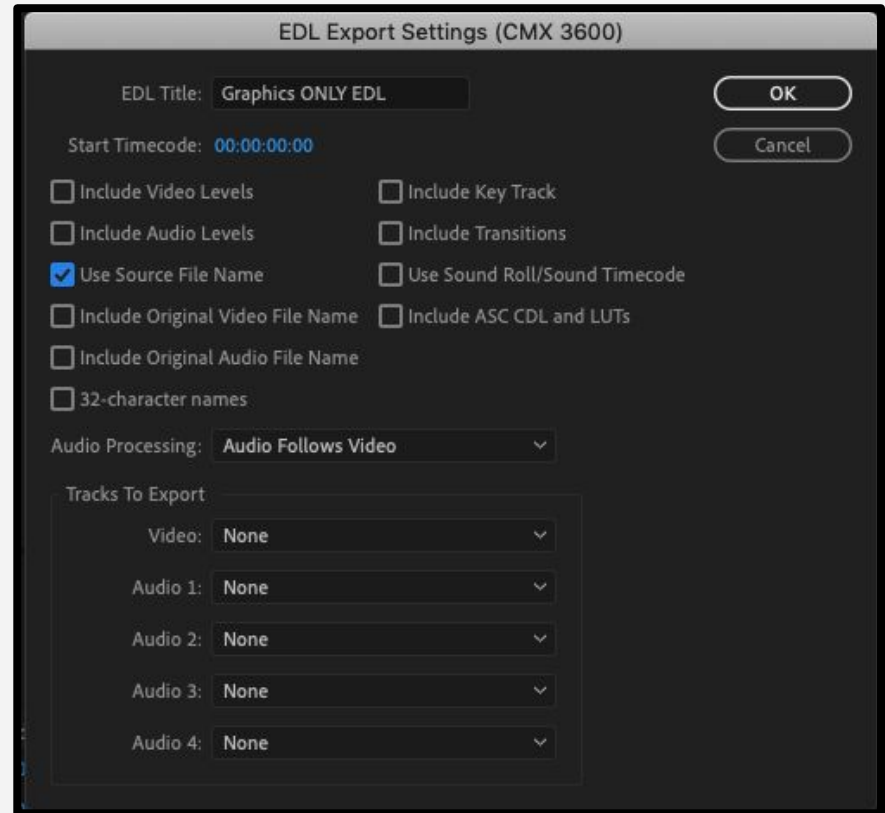
1. Select File, Export, then choose EDL.



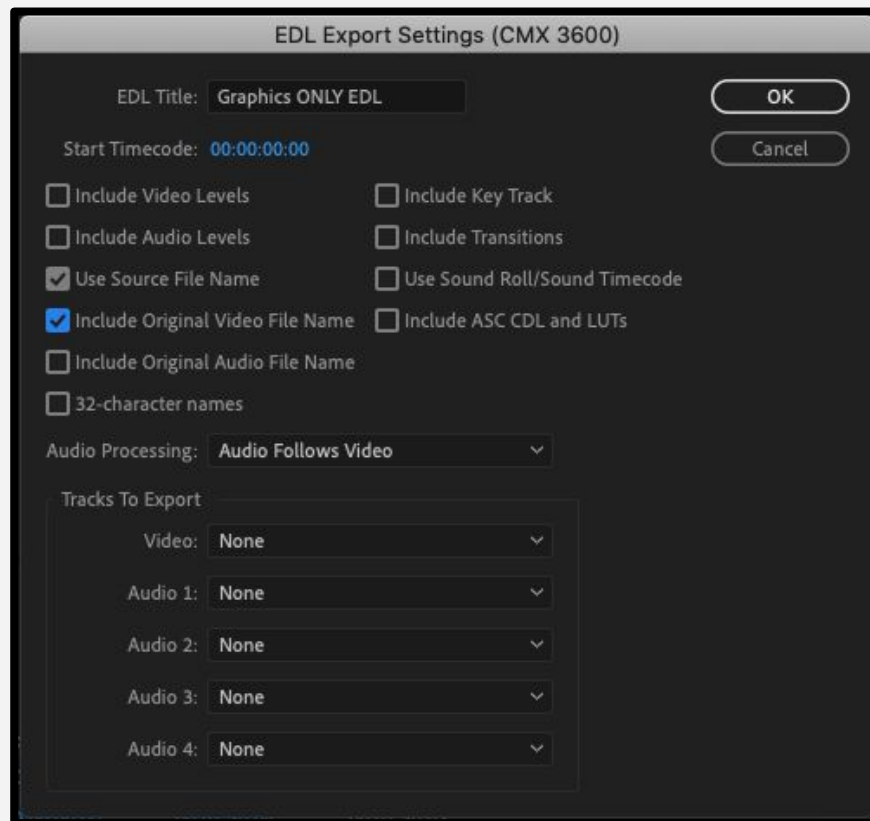
2. Give the file a name, for example, Graphics ONLY EDL.



3. Select Source File Name.

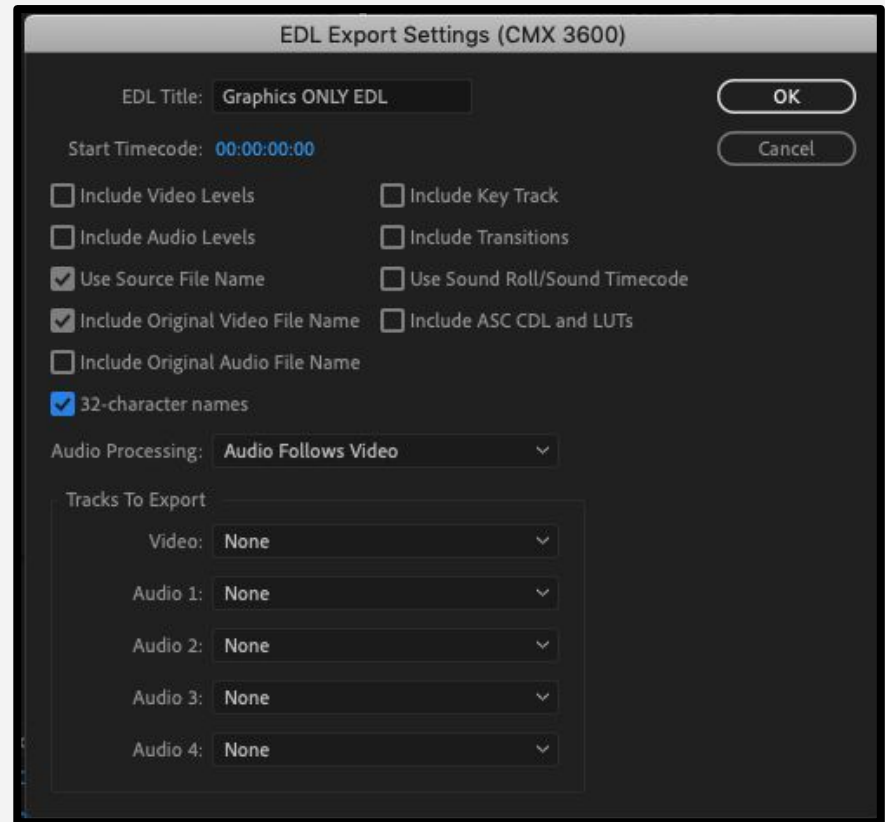


4. Select Include Original Video File Name.

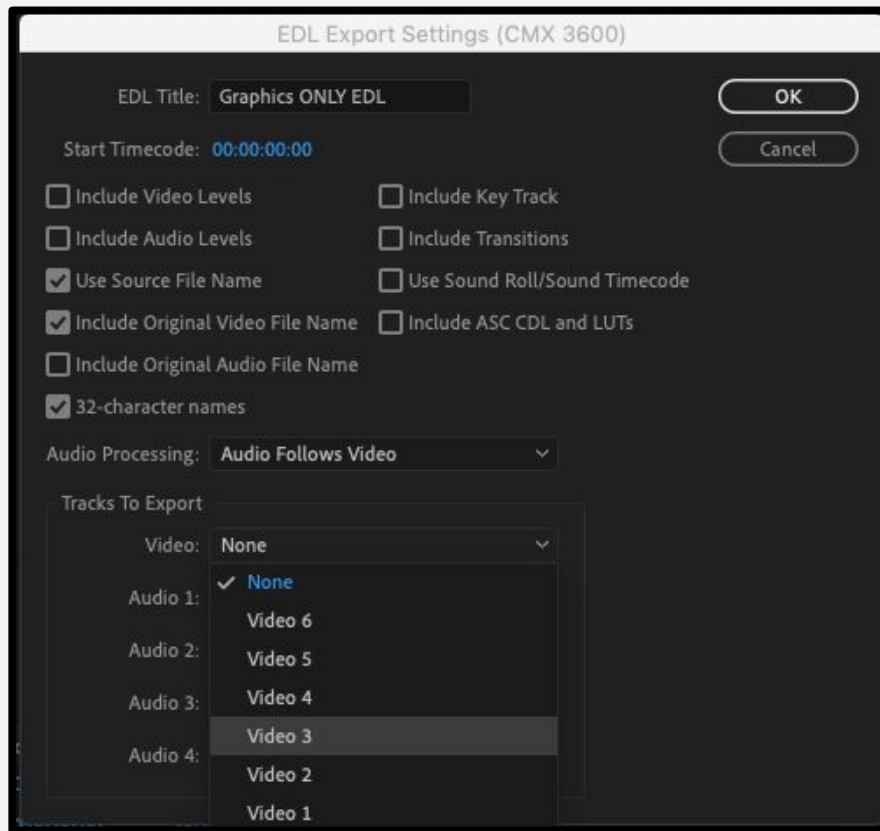


5. Select 32 Character Names.

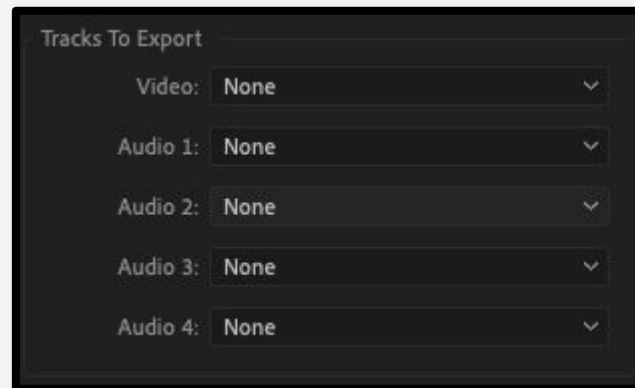
6. Leave the rest unchecked.



7. In Video, select the Video track containing the Graphics, Texted elements and Subtitles. For example, track 3.



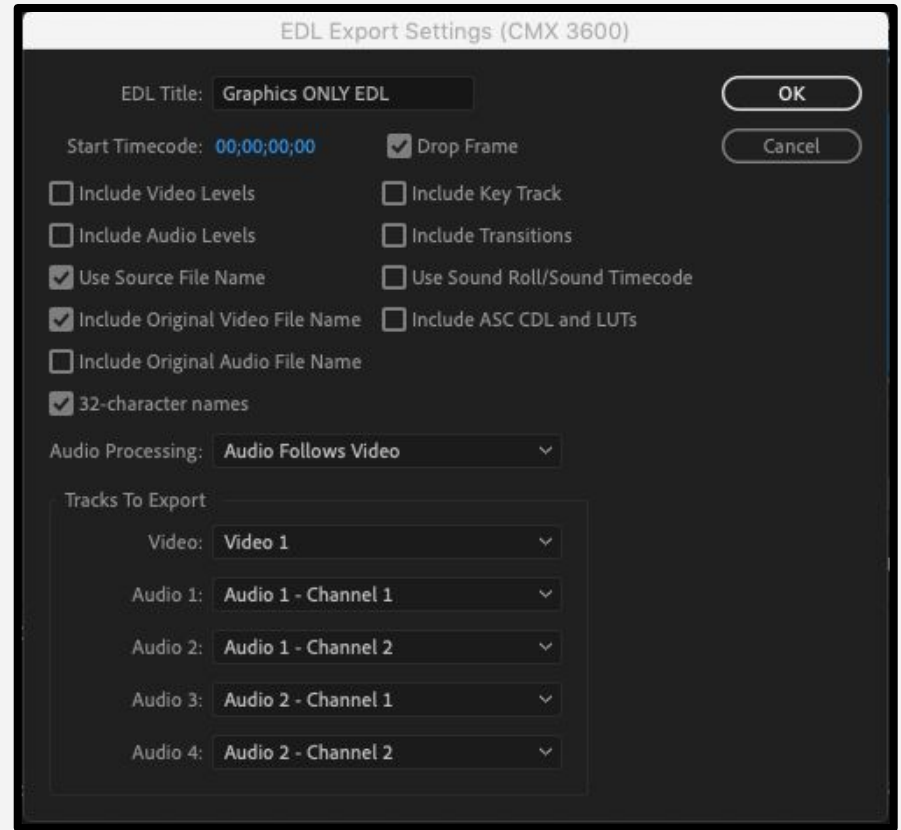
8. Leave all Audio tracks blank.



9. Double-check the file name.

10. Double-check settings.

11. When you are ready, press OK.



Deliver **ME**™

IBMG