

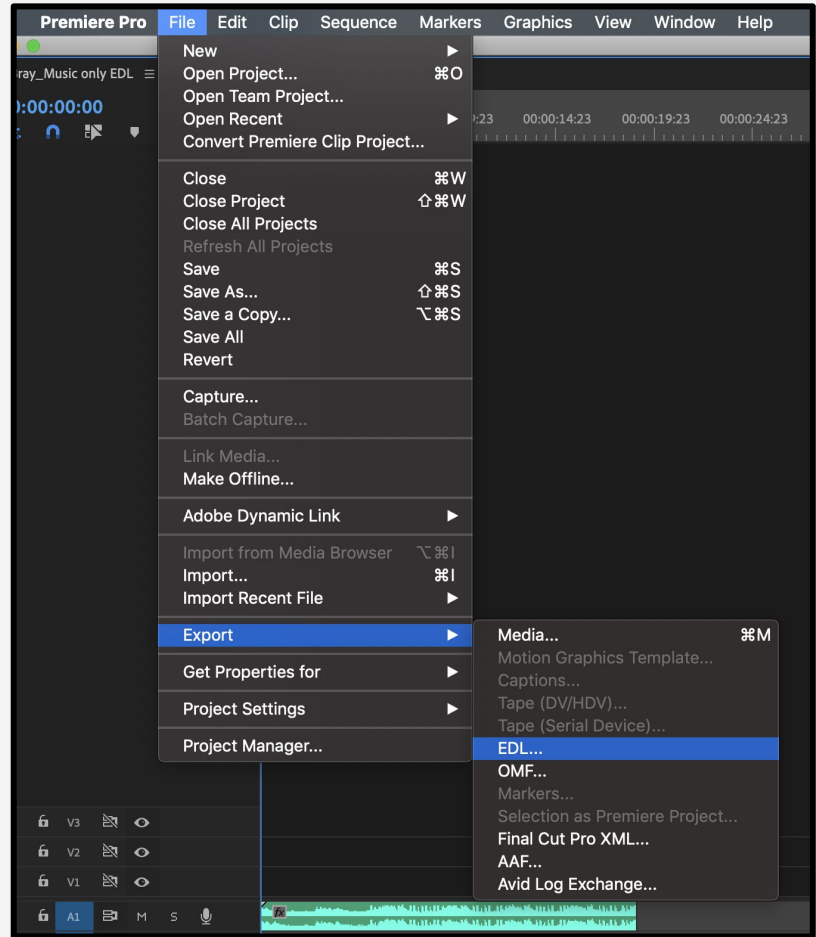
Before you Begin

Before creating an EDL, please prep your sequence. Due to restrictions in Adobe Premiere, EDLs are limited to 4 audio tracks. Please ensure all music files are placed onto a maximum of 4 audio tracks. Any music files that exist on audio tracks outside the 4 audio tracks in the exported EDL, will not be included on the music cue sheet.

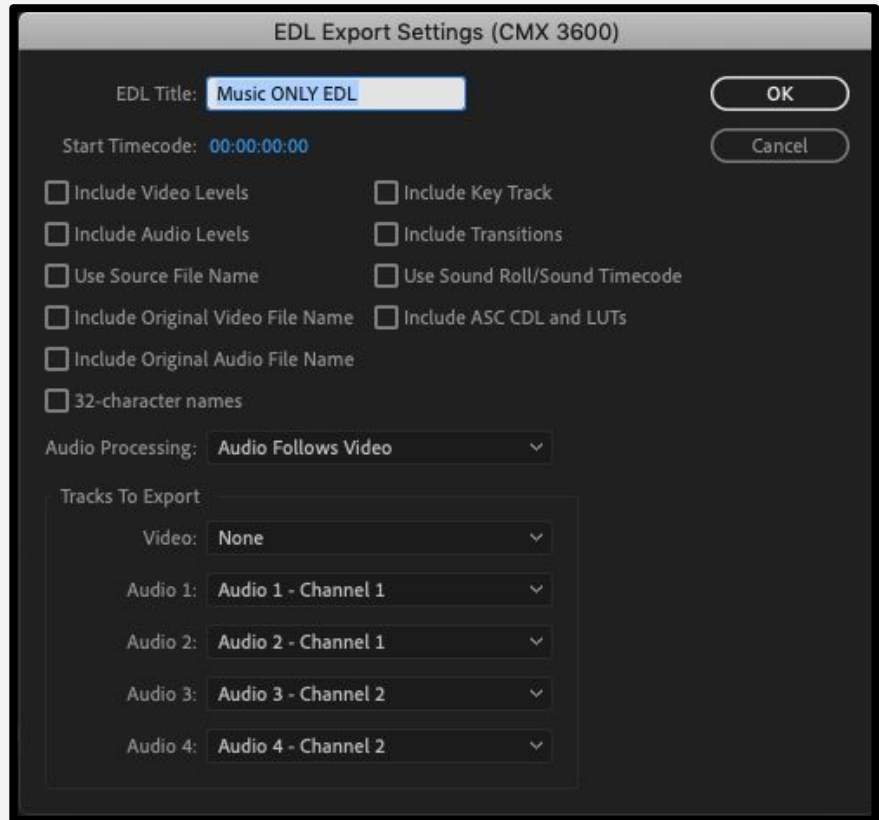
Once your sequence is prepped, take the following steps to export a music only EDL.

Steps to Create a Music Only EDL

1. Select File, Export, then choose EDL.



2. Give the file a name, for example,
Music ONLY EDL.



3. Select Source File Name.

EDL Export Settings (CMX 3600)

EDL Title:

Start Timecode:

Include Video Levels Include Key Track

Include Audio Levels Include Transitions

Use Source File Name Use Sound Roll/Sound Timecode

Include Original Video File Name Include ASC CDL and LUTs

Include Original Audio File Name

32-character names

Audio Processing:

Tracks To Export

Video:

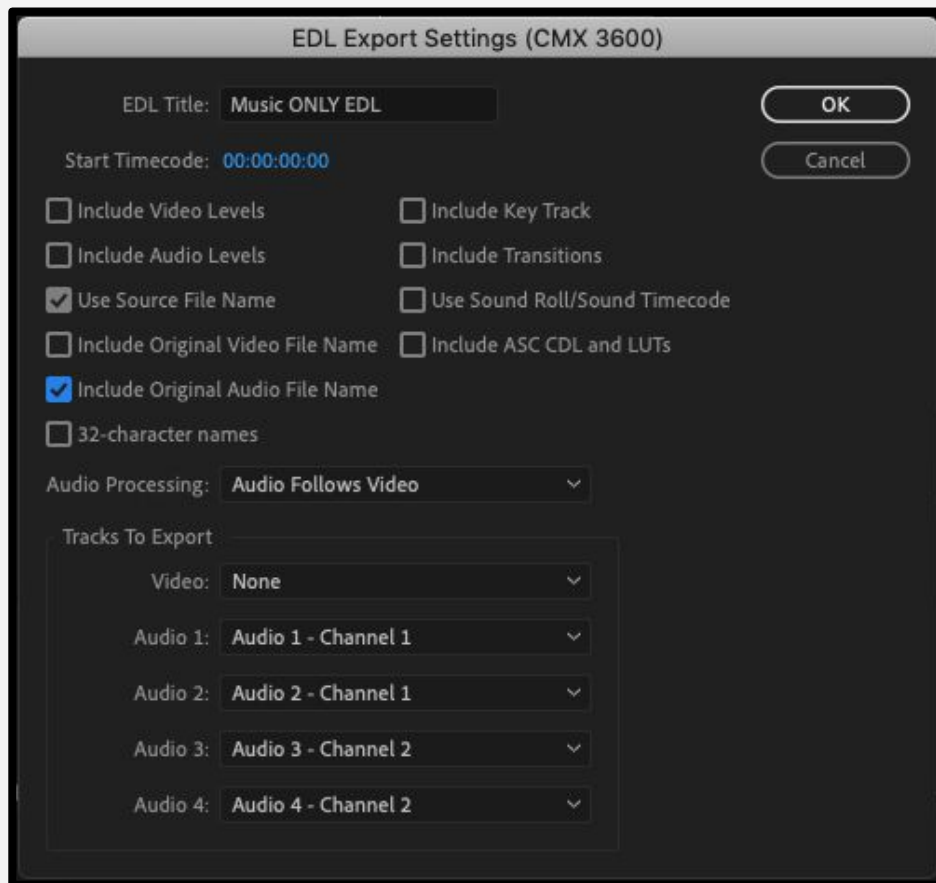
Audio 1:

Audio 2:

Audio 3:

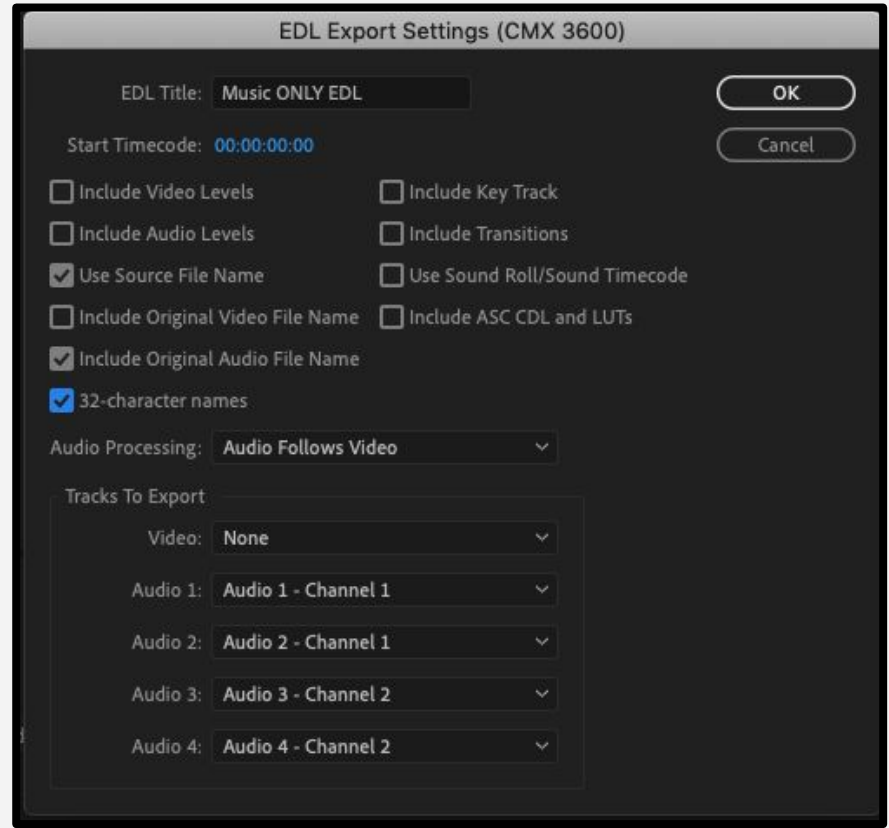
Audio 4:

4. Select Include Original Audio File Name.



5. Select 32 Character Names.

6. Leave the rest unchecked.



7. In Video, select NONE

EDL Export Settings (CMX 3600)

EDL Title: OK

Start Timecode: Cancel

Include Video Levels Include Key Track

Include Audio Levels Include Transitions

Use Source File Name Use Sound Roll/Sound Timecode

Include Original Video File Name Include ASC CDL and LUTs

Include Original Audio File Name

32-character names

Audio Processing: ▾

Tracks To Export

Video: ▾

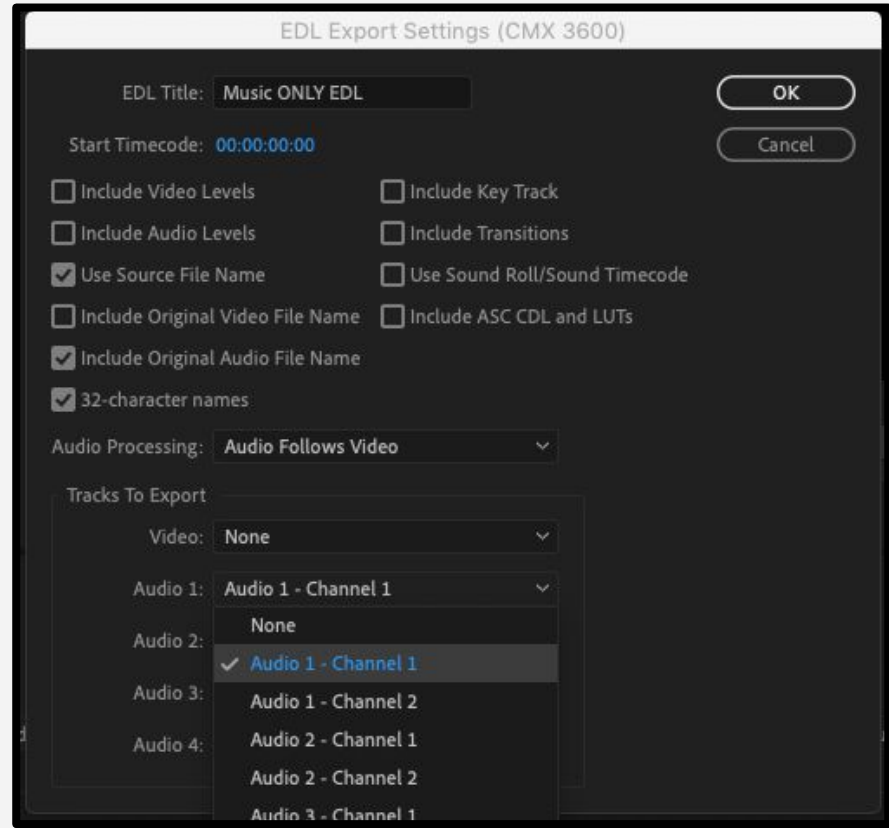
Audio 1: None
 Video 3

Audio 2: Video 2

Audio 3: Video 1

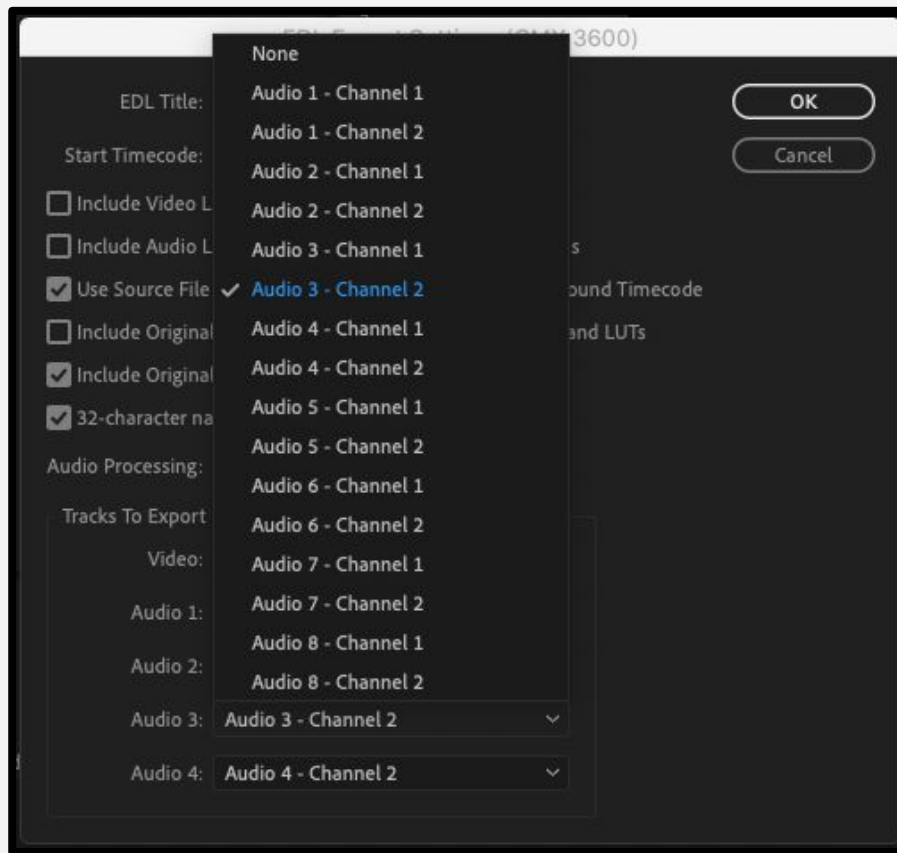
Audio 4: ▾

8. In Audio 1, select the first audio channel that contains music files.
For example, Channel 1.



9. If you have music files in 3 other audio tracks, follow the same steps as you did for Audio 1.

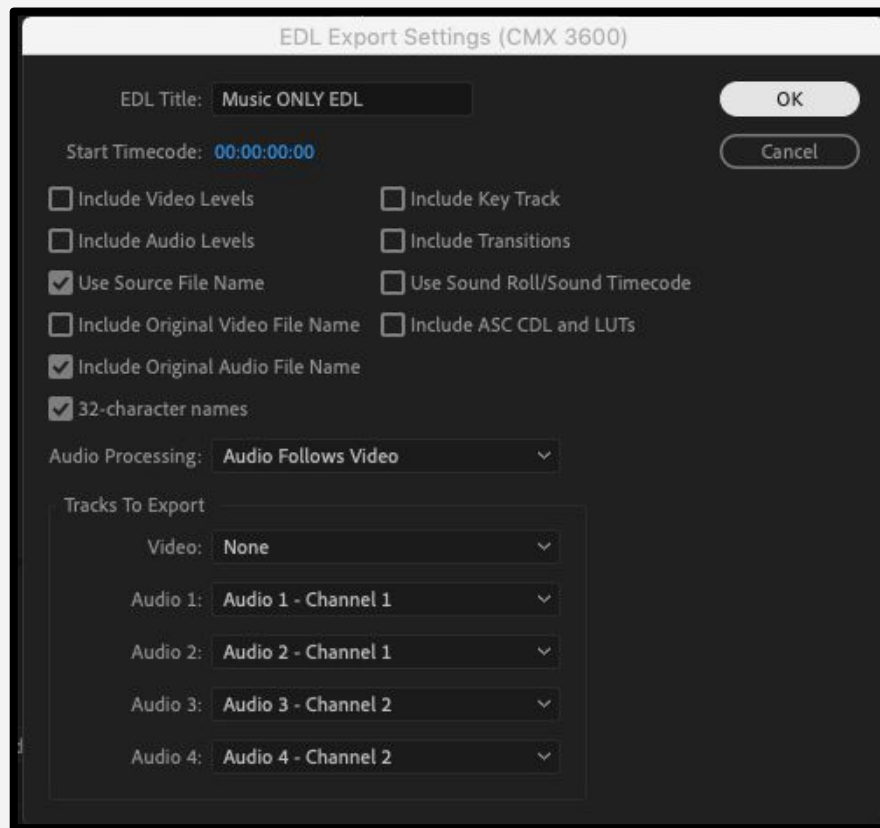
If you have music in less than 4 audio tracks, select None.



10. Double-check the file name.

11. Double-check settings.

12. When you are ready, press OK.



Deliver **ME**™

IBMG